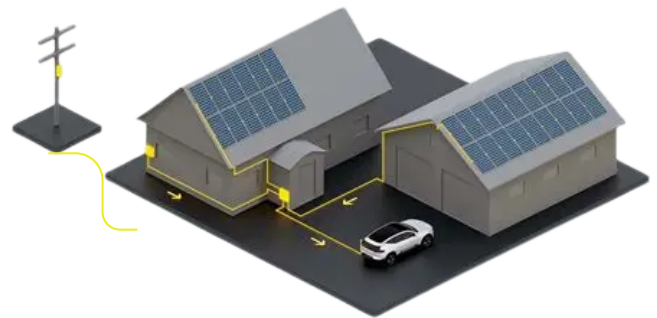


# Solar · Storage · Charging — All-in-One

*A Future-Ready Energy Package for  
Multiplex Conversion Projects*

## The Future of Smart, Sustainable Housing Power, Storage, and EV Ready

Design modern, sustainable homes that optimize energy use, reduce costs, and prepare buyers for the electric vehicle lifestyle. Integrated energy systems provide reliability, resilience, and future-ready living.



Solar & Grid → Hybrid Inverter → Energy Storage  
Bill Savings ← EV Charger ← Home Loads



Tesla Powerwall 3

Indoor/Outdoor Installation  
— Smart Energy Hub



Tesla Wall Connector

Fast EV Charging  
— Indoor/Outdoor  
Compatible



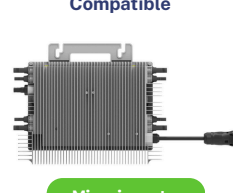
Hybrid Inverter

Solar-to-storage conversion  
— 8kW / 12kW / 15kW  
Capacity Options



Solar Panel

High-Efficiency Power  
Generation



Microinverter

Optimized Solar  
Performance



Battery System

Reliable Backup & Smart  
Distribution Powers

## Impact That Builds Value for Builders

- ✓ Enhance your project's differentiation and appeal with integrated solar, storage, and EV charging
- ✓ Capture solar energy during the day and store it for night-time or peak-rate use
- ✓ Efficiently distribute energy across the home and EV charging points
- ✓ Ensure critical loads remain powered during outages
- ✓ Offer upgrade packages that increase profitability and promote low-carbon living
- ✓ Secure system monitoring and North America-based data backup ensures safety, reliability, and peace of mind

# Smart Energy Packages for Multiplex Projects



## Critical Load Backup (Essential Circuits)

*Reliable backup for essentials during outages  
— budget-friendly and builder-friendly.*



### Option 1: Tesla Ecosystem

1x Powerwall 3 + Wall Connector

- 13.5 kWh usable storage
- 11.5 kW continuous output
- Indoor/outdoor installation
- Tesla App monitoring + TOU automation
- EV charging supported during outages
- Expandable up to multi-unit configurations

### Option 2: STI Solution

1x Hybrid Inverter + Battery System  
+ EV Charger

- Works with separate solar panels + microinverters
- Scalable battery capacity
- Indoor/outdoor installation
- Secure data stored in North America
- Ideal for homes needing essential-load backup with flexible system design



## Whole- Home integrations

*For projects targeting premium buyers, full-home  
electrification, and future-proof EV infrastructure.*



### Option 1: Tesla Whole-Home System

Up to 7x Powerwall 3 + Wall Connector

- Up to ~80 kWh total storage
- 11.5 kW AC per unit
- Full-home backup for days
- Fully indoor/outdoor compatible
- Ideal for luxury homes or high-load properties

### Option 2: STI Whole-Home System

Up to 7x Hybrid Inverters + Battery  
System + EV Charger

- Scalable to whole-home backup
- Works with solar panels + microinverters
- Designed for North American data security
- Cost-effective for large homes or multi-unit projects

## Critical Load Reference

Total Typical Daily Critical Load: 7.49 kWh/day

Powerwall 3 Output: Continuous AC output: ~11.5 kW

1 Powerwall 3 = sufficient to cover typical light-to-medium critical loads for 1 day (most standard homes).